

SILLY OLD BEAR

getcraftywithsally.com

Sally Poole – dannydog75@hotmail.com

Stampin' Up! Demonstrator - Albany Oregon

Cardstock measurements:

1 piece of HYDRANGEA HUE cardstock cut at 5 ½" x 8 ½". Score at 4 ¼".

1 piece of PEACEFUL PINE cardstock cut at 3 7/8" x 5 ¼".

1 piece of VERY VANILLA cardstock cut at 3 5/8" X 5".

1 piece of VERY VANILLA cardstock cut at 4" X 5 ¼". (Inside.)

1 image from SILLY OLD BEAR DSP cut at 3 3/8" x 4 ¾". (Or die cut with 2nd largest RECTANGLE STITCHED die.)

1 scrap of HYDRANGEA HUE.

1 scrap of VERY VANILLA.

Other Supplies:

SILLY OLD BEAR DSP.

SWEET OLD FRIENDS dies.

SWEET WORDS & LABELS bundle.

RECTANGLE STITCHED dies.

TEXTURED NOTES dies.

LAYERING OVALS FRAMELITS dies. (Smallest OVAL – Sentiment. Smallest SCALLOPED OVAL – Layer behind sentiment.)

Inks: SOFT SUEDE or EARLY ESPRESSO.

DIMENSIONALS.

Adhesive.

5 1/2" x 8 1/2"
SCORE AT 4 1/4"

3 7/8" x 5 1/4"

3 5/8" x 5"

getcraftywithsally.com
Sally Poole
Images © Stampin' Up!

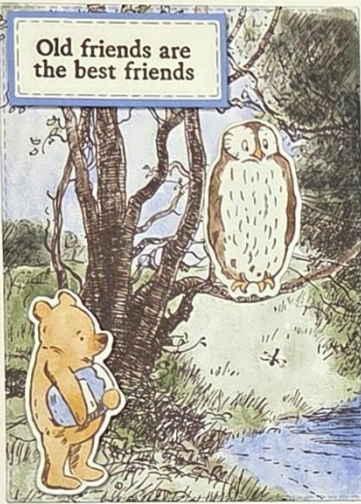
4" x 5 1/4"
INSIDE

3 3/8" x 4 3/4"
~OR~
RECTANGLE
STITCHED DIES

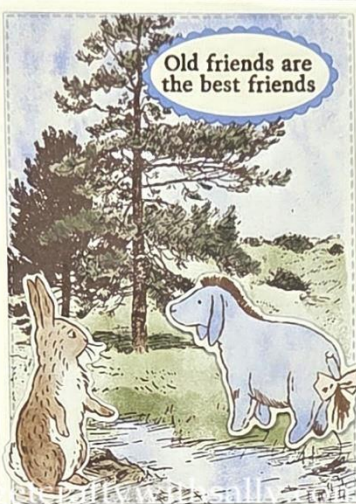
SCRAP OF
HYDRANGEA HUE

SCRAP OF
VERY VANILLA

Old friends are
the best friends



Old friends are
the best friends



You deserve a little treat

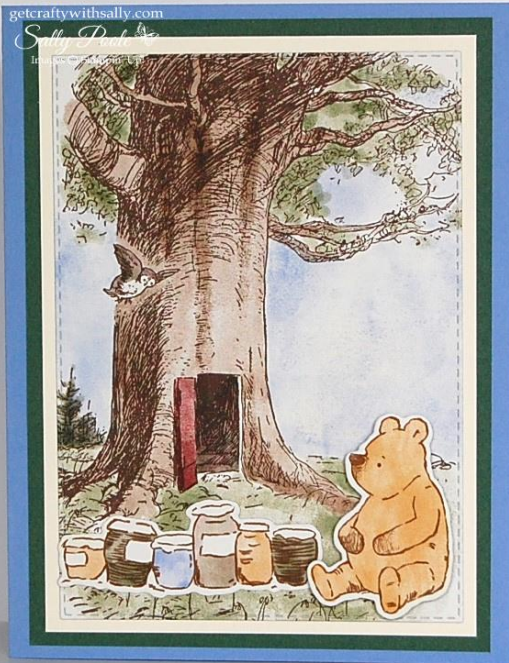
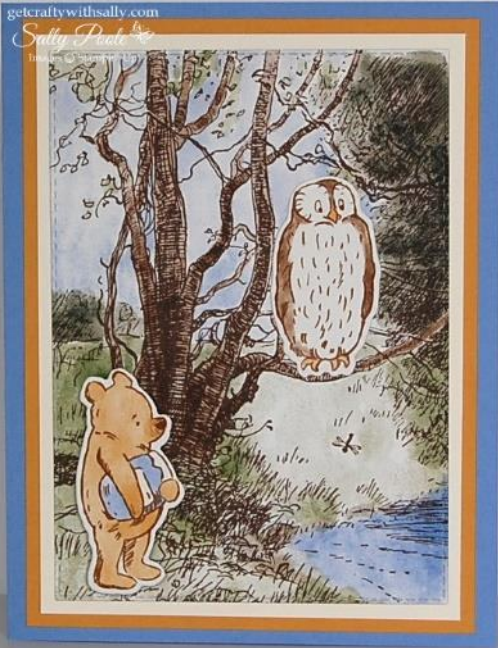


You deserve a little treat



Old friends are
the best friends





Pooh on the tree limb card:

I die cut the image with the 4th from the smallest RECTANGLE STITCHED die. (Approximately 2 3/16" x 3 9/16".)

The SOFT SUEDE cardstock layer behind it is approximately 2 5/16" x 3 11/16".

You can make these whatever size you like.